

COMPACT EXCAVATOR

takeuchiTM
From World First to World Leader

TB235-2



Operating Weight: 3,465 kg

Product Features & Specifications

ENGINE

- EU Stage V / EPA Tier 4 Emission Compliant
- Automatic Fuel Bleed System
- Automatic Deceleration
- Engine Preheat
- Working Modes: Standard, ECO and High Altitude
- High Capacity Fuel Filters
- Engine Safety Start System on the Left Console
- Engine Auto Stop
- Fuel Supply Pump (optional)
- Double Element Air Filter (optional)

ELECTRICAL

- LCD Multi-Informational Display (Canopy)
- 5.7" Color Multi-Informational Display (Cab)
- Sealed Rocker Switches
- 12 volt System with 55 amp Alternator
- Halogen Work Lights
- LED Light Package 1; Front Cover, Boom, and Front Cab (optional)
- LED Light Package 2; Front Cover, Boom, Front Cab, and Rear Cab (optional)
- Beacon Socket and Lamp Switch (Cab Only)
- TFM (Takeuchi Fleet Management, GPS) (optional)*
- TSS (Takeuchi Security System, Immobilizer) (optional)*
- Hour Meter
- Travel Alarm (optional)
- Horn

UNDERCARRIAGE AND FRAME

- Triple Flanged Track Rollers
- 2-Speed Travel with Automatic Shift
- Sloped Frame with Open Centers
- Large Wrap Around Counterweight
- 300 mm Rubber Crawlers
- 300 mm Steel Crawlers (optional)
- Rubber Pads for 300 mm Steel Crawlers (optional)
- Heavy Duty Dozer Blade with Float (optional)
- Power Angle Blade with Float, and Bolt-on Cutting Edge (optional)

OPERATOR'S STATION

- ROPS/TOPS/OPG Level I Canopy/Cab
- Deluxe High Back Suspension Seat
- 2" Retractable Seat Belt
- Head Rest (optional)
- 12V Power Outlet
- Cab with Heat, Defrost, Windshield Wiper and Washer, Skylight w/ Sunshade, AM / FM / MP3 / Bluetooth
- Air Conditioner (Cab Optional)
- Rain Guard (Cab Optional)
- OPG Level II Roof Guard Kit (Cab Optional)
- OPG Level II Front Guard (Cab Optional)

TAKEUCHI FLEET MANAGEMENT

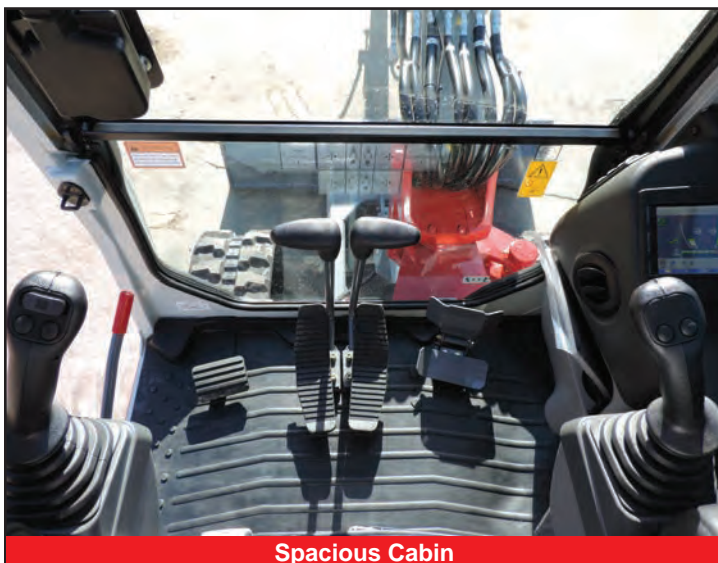
- Minimize Downtime
- Remote Diagnostics
- Utilization Tracking
- Proactive Maintenance
- Control Costs

HYDRAULIC

- Variable Displacement Pump
- Straight Travel Circuit
- Hydraulic Joystick Controls
- Proportional Control for Service Port 1
- Detent for Service Port 1
- Proportional Control for Service Port 2 (optional)
- Service Port 3 for Quick Hitch (optional)
- Proportional Control for Service Port 4 (optional)
- Auxiliary Hydraulic Circuit Plumbed to Arm
- Hydraulic Tank with Fluid Sight Gauge
- Adjustable Auxiliary Flow for Service Port 1, 2, and 4
- Auto Pressure Release (optional)
- Hydraulic Selector Valve (1-way / 2-way)
- Pilot Accumulator (optional)
- Air Breather, Hydraulic Tank
- Auto Tank (optional)

WORKING EQUIPMENT

- Independent Mono Boom Swing
- Cushioned Boom, Arm and Swing Cylinders
- Boom Swing Stopper (optional)
- 1,300 mm Arm
- 1,450 mm Arm
- Arm and Boom Holding Valve with Lift Alarm (optional)
- Pattern Change Valve (ISO or G) (optional)



Spacious Cabin



Automotive Styled Interior

*Functions may not be available in all countries, so please consult your Takeuchi dealer for details.

TOUGH, POWERFUL, RELIABLE



Wraparound Counterweight



All Steel Construction



Cushioned Cylinders



Triple Flanged Track Rollers

Ease of transport and an excellent working range make the TB235-2 a great choice for owner-operators, rental companies, utilities and general contractors. The TB235-2 has all steel construction, a spacious operator station available with air conditioned cab (optional), an automotive styled interior, outstanding multi-function operation, LED light package (optional) and cushioned boom, arm and swing cylinders for enhanced performance comfort and durability. The TB235-2 has the latest

emission standards compliant engine that has no DPF for low maintenance operation. Additional features include an automatic fuel bleed system, double element air filters (optional), large wrap around counterweight, and exceptional serviceability due to the engine and side hood that open overhead for greater convenience. The operator is protected by ROPS/TOPS/OPG Level I canopy or cab for greater peace of mind and comfort.



Lockable service hoods lift overhead for outstanding maintenance access.

OPERATING PERFORMANCE

Operating Weight - Cab	3,465 kg
Operating Weight - Canopy	3,365 kg
Bucket Capacity (Heaped)	0.105 m ³
Slew Speed	9.3 min ⁻¹
Travel Speed	
1st	2.8 km/h
2nd	4.2 km/h
Gradeability	30°
Ground Pressure - Cab	31.4 kPa
Ground Pressure - Canopy	30.4 kPa
Maximum Bucket Breakout Force	27.1 kN
Maximum Arm Digging Force (1,300 mm Arm)	18.7 kN
Maximum Arm Digging Force (1,450 mm Arm)	17.3 kN
Traction Force	40.5 kN
Boom Swing Angle (Left/Right)	70° / 55°

ENGINE

Model	Yanmar / 3TNV88F
Rated Output (ISO 14396)	18.2 kW / 2,400 min ⁻¹
Maximum Torque	92.2 Nm / 1,440 min ⁻¹
Displacement	1,642 ml
Alternator	12V - 0.66 kW
Battery (IEC 60095-1)	12V - 68 A·h

FLUID CAPACITY

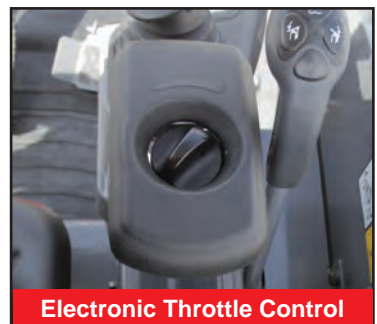
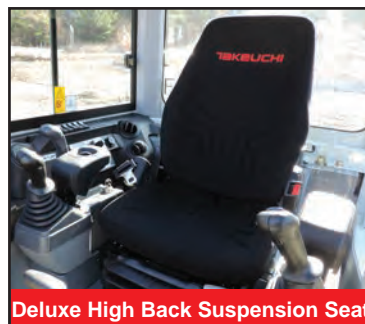
Engine Lubrication	4.7 L
Cooling System	4.0 L
Fuel Tank Capacity	46.0 L
Hydraulic Reservoir Capacity	35.0 L
Hydraulic System Capacity	68.0 L

HYDRAULIC SYSTEM

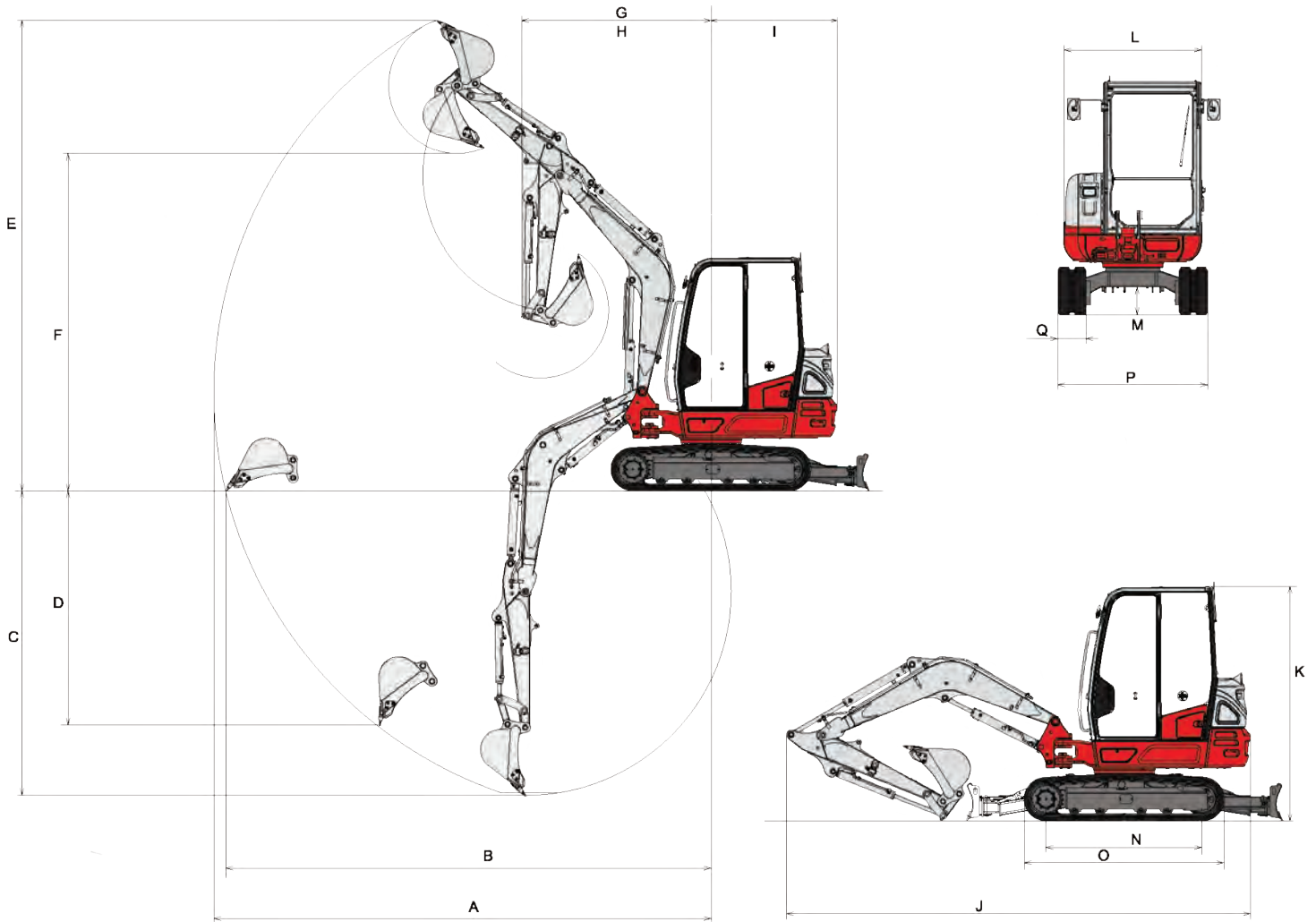
P1, P2	Variable Displacement Pump
Flow Rate	38.9 L/min
Relief Pressure	24.5 MPa
P3	Gear Pump
Flow Rate	21.6 L/min
Relief Pressure	20.0 MPa
Service Port 1	
Flow Rate	60.5 L/min
Hydraulic Pressure	21.0 MPa
Service Port 2	
Flow Rate	21.6 L/min
Hydraulic Pressure	20.0 MPa
Service Port 3	
Hydraulic Pressure	20.0 MPa
Service Port 4	
Flow Rate	21.6 L/min
Hydraulic Pressure	20.0 MPa

SAFETY and HEALTH

Vibration Levels	
Hand / Arm	≤ 2.5 m/s ²
Body	≤ 0.5 m/s ²
Noise Level	
Sound Power Level	L _{WA} 93 dB



TB235-2 Compact Excavator



MACHINE DIMENSIONS	1,300 mm Arm	1,450 mm Arm
A Maximum Reach	5,115 mm	5,255 mm
B Maximum Reach at Ground Level	4,985 mm	5,130 mm
C Maximum Digging Depth	3,095 mm	3,245 mm
D Maximum Vertical Digging Depth	2,350 mm	2,495 mm
E Maximum Height of Cutting Edge	4,910 mm	5,010 mm
F Maximum Dumping Height	3,495 mm	3,595 mm
G Front Swing Radius	1,985 mm	2,005 mm
H Front Swing Radius with Boom Offset	1,650 mm	1,660 mm
I Slew Radius	1330 mm	1,330 mm
J Overall Length	4,860 mm	4,900 mm
K Overall Height (Cab / Canopy)	2,495 mm / 2,510 mm	2,495 mm / 2,510 mm
L Upper Structure Overall Width	1,460 mm	1,460 mm
M Ground Clearance	295 mm	295 mm
N Crawler Base	1,645 mm	1,645 mm
O Crawler Overall Length	2,110 mm	2,110 mm
P Crawler Overall Width	1,580 mm	1,580 mm
Q Crawler Shoe Width	300 mm	300 mm



© 2019 Takeuchi MFG. Co., Ltd. All Rights Reserved. In accordance with our established policy of continued improvement, specifications and features are subject to change without notice. Pictures may show options other than standard equipment.

FORM: TB235-5 Compact Excavator Spec Sheet - Jan. 2019

TAKEUCHI[™]
From World First to World Leader